



Heard Photography Club

Trip Planning Resource

Trip: **Olympic National Park, Washington**



## Table of Contents

Dates of Travels.....	4
Transportation .....	4
Dates of Travels.....	4
Lodging – Seattle.....	4
Restaurant – Seattle.....	5
Places to See – Seattle .....	6
Roads Traveled.....	7
Restaurant – Lake Quinault Lodge .....	8
Roads Traveled.....	9
Dates of Travels.....	9
Lodging – Forks .....	9
Restaurants – Kalaloch Lodge .....	9
Restaurants – Forks.....	10
Places to See – Forks.....	11
Places to See – Olympic National Park.....	12
Places to See – Coastline.....	18
Dates of Travels.....	20
Lodging – La Push.....	20
Restaurant – La Push.....	21
Places to See – Forks/La Push .....	22
Places to See – CQ 113 Scenic Byway .....	22
Dates of Travels.....	23
Lodging – Port Angeles.....	23
Restaurant – Port Angeles .....	24
Places to See – Port Angeles .....	25
Places to See – Port Crescent.....	25
Transportation .....	26
Dates of Travels.....	27
Lodging – Seattle.....	27
Restaurant – Seattle.....	28
Places to See – Seattle .....	29
Transportation .....	29



APPENDIX 1 – Pricing Scale for Lodging .....	30
APPENDIX 2 – Pricing Scale for Restaurants .....	30
APPENDIX 3 – Hiking Level Scale .....	30
APPENDIX 4 – Map .....	31



All pictures © Elisabeth L Shore, unless otherwise credited.

#### Dates of Travels

Aug 30 – Sep 9, 2017

NOTE: All lodging/car rental costs for this trip were priced out for 4 persons to a room. Where the lodging prices are showing costs, it is the original price per person per night, and does not reflect the price per person actually paid.

#### Transportation

Aug 30, 2017: DFW – SEA (on American Airlines)



Mount Rainier on the way into the Seattle airport.

Enterprise Car Rental used to rent an SUV vehicle at airport.

#### Dates of Travels

Aug 30 – Aug 31, 2017

#### Lodging – Seattle

Establishment Name	Establishment Location	Pricing	Recommendation
The Paramount Hotel (Seattle Central Business District) <a href="http://www.paramounthotelseattle.com">www.paramounthotelseattle.com</a>	724 Pine St., Seattle WA 98101 PH: 206-292-9500	\$\$  NOTE: There is a fee to pay for parking overnight \$45.12 for valet; \$25/24 hr across the street.	Excellent hotel to stay when in Seattle. Trip Advisor Hall of Fame 2014-2018. Located 3 blocks NE of the Airport Link Light Rail Westlake Station. Within walking distance (10-15 mins) to Pike Market.



## Restaurant – Seattle

Establishment Name	Establishment Location	Pricing	Recommendation
<b>Sharps Roasthouse</b> (American Restaurant/Pub) Hours: 11:00a – 12:00a <a href="http://www.sharpsroasthouse.com">www.sharpsroasthouse.com</a>	18427 Pacific Hwy. S, SeaTac, WA 98188 (206-241-5744)	\$\$ - \$\$\$	9/10 (on FB) Food was very good. They had a GREAT warm cornbread with maple butter appetizer.
<b>Dragonfish Asian Café</b> (restaurant connected to The Paramount Hotel) (Sushi/Asian Fusion) Hours: Daily 7:00a – 1:00a <a href="http://www.dragonfishcafe.com">www.dragonfishcafe.com</a>	722 Pine St., Seattle WA 98101 PH: 206-467-7777	\$\$	Served morning Continental Breakfast – very good food.



Establishment Name	Establishment Location	Pricing	Recommendation
<b>Elliott's Oyster House</b> (Seafood/Oysters) Hours: Su-Th 11:00a – 10:00p; Fr-Sa 11:00a – 11:00p <a href="http://www.elliottsoysterhouse.com">www.elliottsoysterhouse.com</a>	Pier 56 - 1201 Alaskan Way, Suite 100, Seattle WA 98101 PH: 206-623-4340	\$\$\$	Excellent! Worth every penny to eat there at least once. Indoor/outdoor seating.





## Places to See – Seattle

Establishment Name	Establishment Location	Pricing	Recommendation
TESLA (Car Dealership) Hours: M-Sa 10:00a – 6:00p; Su 12:00n – 5:00p <a href="http://www.tesla.com">www.tesla.com</a>	435 Westlake Ave. N, Seattle WA 98109 PH: 206-682-2625	Unknown	Neat place to look at cars you don't get to see that often.

Establishment Name	Establishment Location	Pricing	Recommendation
Seattle Space Needle (Museum) Hours: M-Sa 10:00a – 6:00p; Su 12:00n – 5:00p <a href="http://www.spaceneedle.com">www.spaceneedle.com</a>	400 Broad St., Seattle WA 98101 PH: 206-682-2625	See below.	Worth seeing the Needle and Chihuly Gardens

### Space Needle General Admission (One visit to the top)

Regular (ages 13-64)	\$29 / \$24*
Senior (ages 65+)	\$24 / \$21*
Youth (ages 5-12)	\$19 / \$14*

\*Admission after 6 PM

### Space Needle + Chihuly Garden and Glass (See both for one price)

Regular (ages 13-64)	\$44 / \$42*
Senior (ages 65+)	\$37 / \$35*
Youth (ages 5-12)	\$28 / \$26*

\*Admission after 6 PM

### Space Needle Day/Night Pass (Two visits to the top)

Regular (ages 13-64)	\$44
Senior (ages 65+)	\$37
Youth (ages 5-12)	\$29

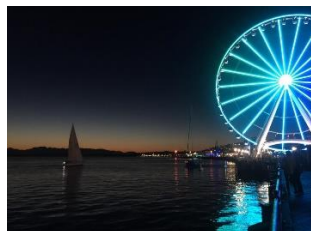
We rode the Monorail into the Space Needle base. It was fun and we got to relax and look around on the ride in.

The Chihuly Garden and Glass exhibit was fabulous. The glass work was breathtaking, and I took some of my favorite images from there using my iPhone! The outside gardens were fun to see how they incorporated the glass art into the garden layout.





Establishment Name	Establishment Location	Pricing	Recommendation
Pier 55 Seattle Waterfront (Retail; Restaurants; Arcades) Hours: <a href="http://www.downtownseattle.com/neighborhoods/waterfront">www.downtownseattle.com/neighborhoods/waterfront</a> <a href="http://www.downtownseattle.org/programs-and-services/">www.downtownseattle.org/programs-and-services/</a>	400 Broad St., Seattle WA 98101 PH: 206-682-2625	See website links, as pricing varies.	9.8/10 on FB This is a fun place to see, especially at night with the Seattle Ferris Wheel all lit up. Makes for some neat pictures.



Road Conditions Around Olympic National Park:

[www.nps.gov/olym/planyourvisit/current-road-conditions.htm](http://www.nps.gov/olym/planyourvisit/current-road-conditions.htm)

Trip Planning for Olympic National Park:

[www.nps.gov/olym/index.htm](http://www.nps.gov/olym/index.htm)

[www.olympicnationalparks.com/](http://www.olympicnationalparks.com/)

#### Roads Traveled

From Seattle, take Interstate Highway 5 (south) towards Tacoma and in to Olympia. In Olympia, take Highway 101 (north or west), then Highway 101/8 (west) to McCleary, and follow this to Aberdeen. In Aberdeen, you will continue on Highway 101/8 heading towards Quinalt (north) until you come to Lake Quinalt Lodge.

We stopped off at the Walmart in Aberdeen to pick up some food supplies for the week (909 E. Wishkah St., Aberdeen, WA 98520).



## Restaurant – Lake Quinault Lodge

Establishment Name	Establishment Location	Pricing	Recommendation
Lake Quinault Lodge – Roosevelt Dining Room (Hotel with American Restaurant) Hours for the Restaurant vary based on the season.  <a href="http://www.olympicnationalparks.com/lodging/lake-quinault-lodge">www.olympicnationalparks.com/lodging/lake-quinault-lodge</a>  <a href="https://www.olympicnationalparks.com/lodging/dining/lake-quinault-lodge/">https://www.olympicnationalparks.com/lodging/dining/lake-quinault-lodge/</a>	345 South Shore Rd., Quinault, WA 98575 PH: 360-288-2900	See website for pricing, as we did not stay here.	Highly recommended! We ate on the patio overlooking the lawn and Lake Quinault. It was beautiful. I would like to come back here at stay at the hotel.



(Images from Lake Quinault Lodge website gallery)



Lake Quinault Lodge offers more than 15 well-maintained trails covering 8 miles with occasional interpretive signs, from short or long to leisurely or invigorating. The Front Desk has a map of the area hiking trails.

[www.olympicnationalparks.com/things-to-do/hiking-olympic-peninsula/hiking-at-lake-quinault-lodge/](http://www.olympicnationalparks.com/things-to-do/hiking-olympic-peninsula/hiking-at-lake-quinault-lodge/)

Best time to take pictures: Personally unknown. We were there during mid-day for a lunch stop. We did walk the trail down by the water front and around the corner from the lodge. It was very pretty.

Clothing needed: Varies by season; bug spray.

Equipment needed: Tri-pod; telephoto lens; macro lens

Hiking level: Easy to Moderate.

Wildlife to observe: Personally unknown.



### Roads Traveled

From Quinault, follow Highway 101 (north) through Queets and over the Queets River along the coastline. Kalaloch Lodge at Olympic National Park will be on the left side of the road.

### Dates of Travels

Sep 1 – Sep 2, 2017

### Lodging – Forks

Establishment Name	Establishment Location	Pricing	Recommendation
Kalaloch Lodge <a href="http://www.thekalalochlodge.com">www.thekalalochlodge.com</a>  Lodging in the Main Lodge, the Cabins, or the Seacrest House.	157151 US-101, Forks WA 98331 PH: 866-662-9969	\$\$\$	9.2/10 (on FB) I LOVED this place and will definitely come back on another trip.

The office is located in the Main Lodge. The Main Lodge has a gift shop and nearby mercantile to purchase souvenirs, snacks, or camping and hiking supplies. They also provide a live web cam from the Main Lodge to see what the weather is looking like – and it's updated every 30 seconds.

<https://www.thekalalochlodge.com/about/kalaloch-web-cam>

### Restaurants – Kalaloch Lodge

Establishment Name	Establishment Location	Pricing	Recommendation
Creekside Restaurant (Breakfast, Lunch & Dinner) <a href="http://www.thekalalochlodge.com/dine-and-shop/creekside-restaurant/dinner-menu">www.thekalalochlodge.com/dine-and-shop/creekside-restaurant/dinner-menu</a>	1457151 US-101, Forks, WA 98331	\$\$ - \$\$\$	They have excellent food. They serve fresh local, sustainable cuisine.

The Creekside restaurant located in the Main Lodge has a beautiful view over the ocean for evening dinner and a sunset to enjoy. You will want to make reservations for your meals here, especially if you want an inside table with a view. I think there are about 10 tables that have a nice view. They also have a nice outdoor patio seating area if there is nice weather.

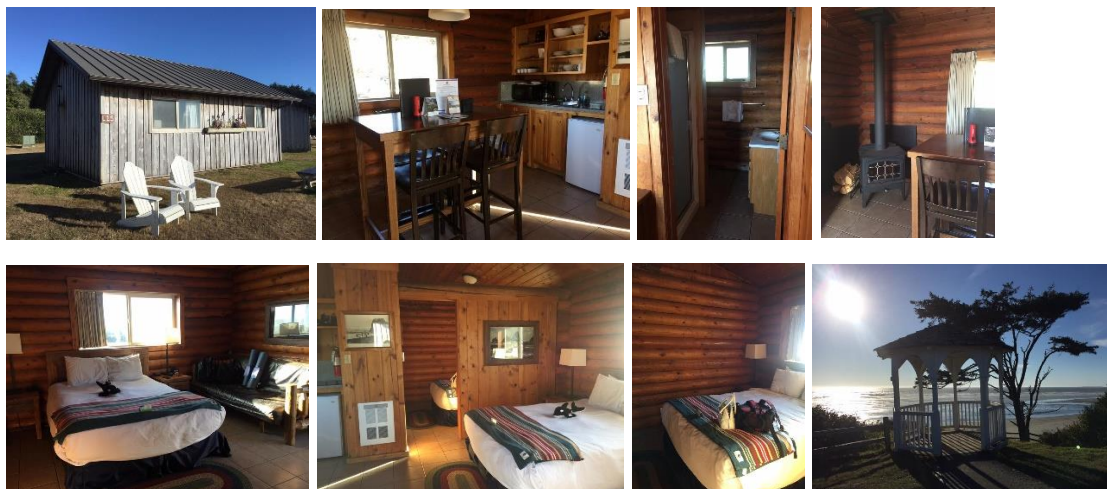






Images from Kalaloch Lodge website under Gallery.

We stayed in the Kalaloch Cabin #25. It was a little set back from the Bluff, but we had the windows open at night with a wonderful cool breeze coming in and the sounds of the ocean waves to listen to while we fell asleep. We had a wood-burning fireplace and a small kitchen with a table, 2 queen beds, 1 bathroom, and a sofa. Worth staying here.



Best time to take pictures: Sunrise and Sunset. We did walk the stairs by the gazebo down to the water front and to take pictures of the sunset and the shore birds. It was very pretty and peaceful.

Clothing needed: Varies by season; bug spray.

Equipment needed: Tri-pod; telephoto lens; macro lens

Hiking level: Moderate – somewhat steep stairs to get down to the beach and water.

Wildlife to observe: Shore bird species and whales during migration seasons.

#### Restaurants – Forks

Establishment Name	Establishment Location	Pricing	Recommendation
Pacific Pizza (Pizzeria) Hours: M 11:00a – 9:00p; Tu-Su 11:00a – 10:00p	870 S. Forks Ave., Forks, WA 98331 PH: 360-374-2626	\$ - \$\$	7.2/10 (on FB) Not the tastiest pizza I've ever had, but it was good. I would eat here again.



## Places to See – Forks

Establishment Name	Establishment Location	Pricing	Recommendation
Three Rivers Resort (Gas Station, Cabin Lodging, Camping, Restaurant and Store) <a href="http://www.threeriversresortandguideservice.com/">www.threeriversresortandguideservice.com/</a>	7764 La Push Rd., Forks, WA 98331 PH: 360-374-5300	\$	This is the place to visit if you are a “Twilight” series book and movie fan. Restaurant only is closed (Nov-Mar for slow season).

Beautiful Rivers, hiking, and lots of outdoor fun. A very affordable and excellent location. Only 10 mins. from Forks and 6 mins. from La Push.



Best time to take pictures: We did not spend a lot of time in this location for photography, so there are no recommendations at this time for time/places to take pictures, other than to enjoy being where the Twilight story took place and was filmed.

Clothing needed: Based on weather and travel requirements.

Equipment needed: Based on weather and scenic requirements.

Hiking level: Personally unknown.

Wildlife to observe: Personally unknown.

Establishment Name	Establishment Location	Pricing	Recommendation
Forks Visitor's Information Center  Summer Hours: (Memorial Day thru Sep 30) M-Sa 10:00a – 5:00p Su 11:00a – 4:00p  Winter Hours:	1411 S. Forks Ave., Forks, Washington 98331 PH: 360-374-2531		Stop by for information on: Twilight sites, Hoh Rain Forest, Pacific Ocean Beaches, Waterfall Trail, lodging, restaurants, shops and activities like



(Oct 1 thru Memorial Day) M-Sa 10:00a – 4:00p Su 11:00a – 4:00p  <a href="http://www.forkswa.com/visiting-forks/">www.forkswa.com/visiting-forks/</a>			fishing, kayaking, biking, hiking, camping and much more. Clean restrooms available during business hours. Free Wi-Fi available 24/7 and extends into the parking area. Ample parking for RVs.
---	--	--	--



(Photograph from Forks Visitor Information Center website)



#### Places to See – Olympic National Park

Establishment Name	Establishment Location	Pricing	Recommendation
Hoh Rainforest <a href="http://www.olympicnationalparks.com">www.olympicnationalparks.com</a>	Forks, WA 98331		9.4/10 on FB



Best time to take pictures: Morning light is best, especially if there is fog. Daytime tends to get a little muggy with the heat of the sun, and evening just gets dark.

Clothing needed: Based on weather and travel requirements.

Equipment needed: Based on weather and scenic requirements.

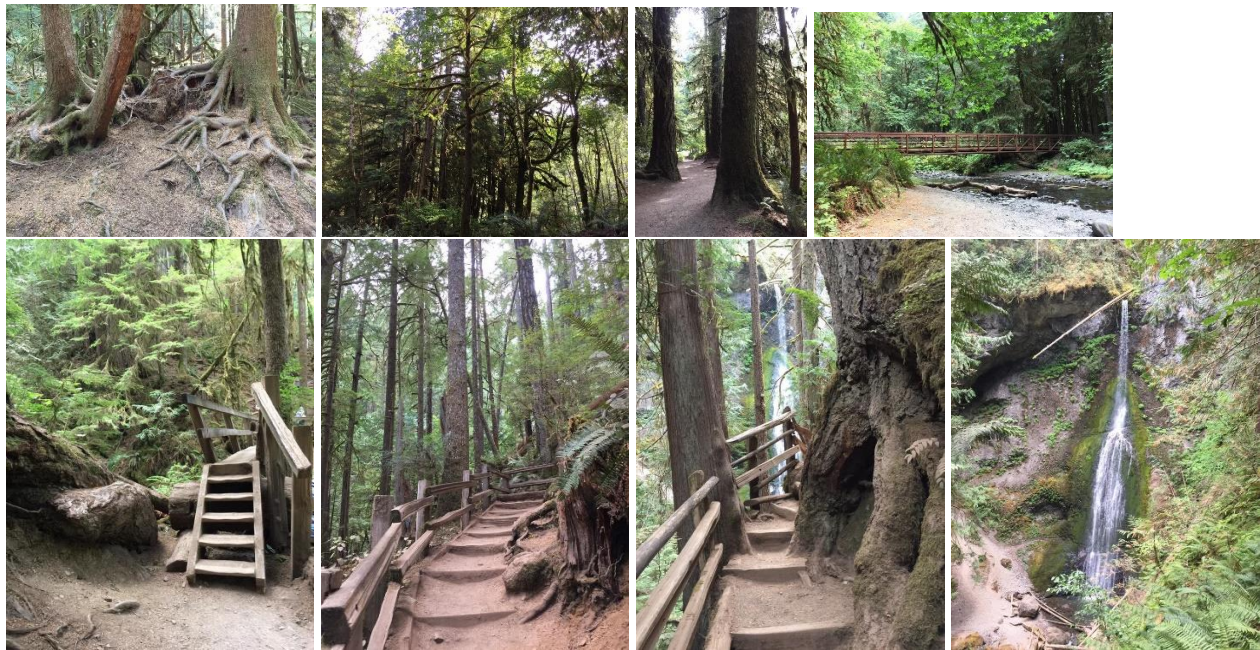
Hiking level: Moderate.

Wildlife to observe: Various bird species. We never saw anything else while we were there.



Establishment Name	Establishment Location	Pricing	Recommendation
Marymere Falls	Port Angeles, WA 98363 PH: 360-928-3380	FREE	

Marymere Falls is located in Olympic National Park near Lake Crescent. The falls are accessed by a one-mile, well maintained, dirt trail through old-growth lowland forest consisting of fir, cedar, hemlock, and alder trees. Steep stairs required to get to the falls. Falls Creek descends from Aurora Ridge and tumbles over Marymere Falls and then flows into Barnes Creek. It has a height of 90 feet. Marymere Falls is one of the more popular attractions in the area, due to ease of access and proximity to U.S. Highway 101.



Best time to take pictures: We were here in mid-day. While it wasn't bad, I would definitely go back in the morning to see what morning light would do.

Clothing needed: Based on weather and travel requirements.

Equipment needed: Based on weather and scenic requirements. Graduated ND or a full ND filter for sure to get the waterfall to look like liquid satin.

Hiking level: Moderate – somewhat steep stairs to get to the waterfall.

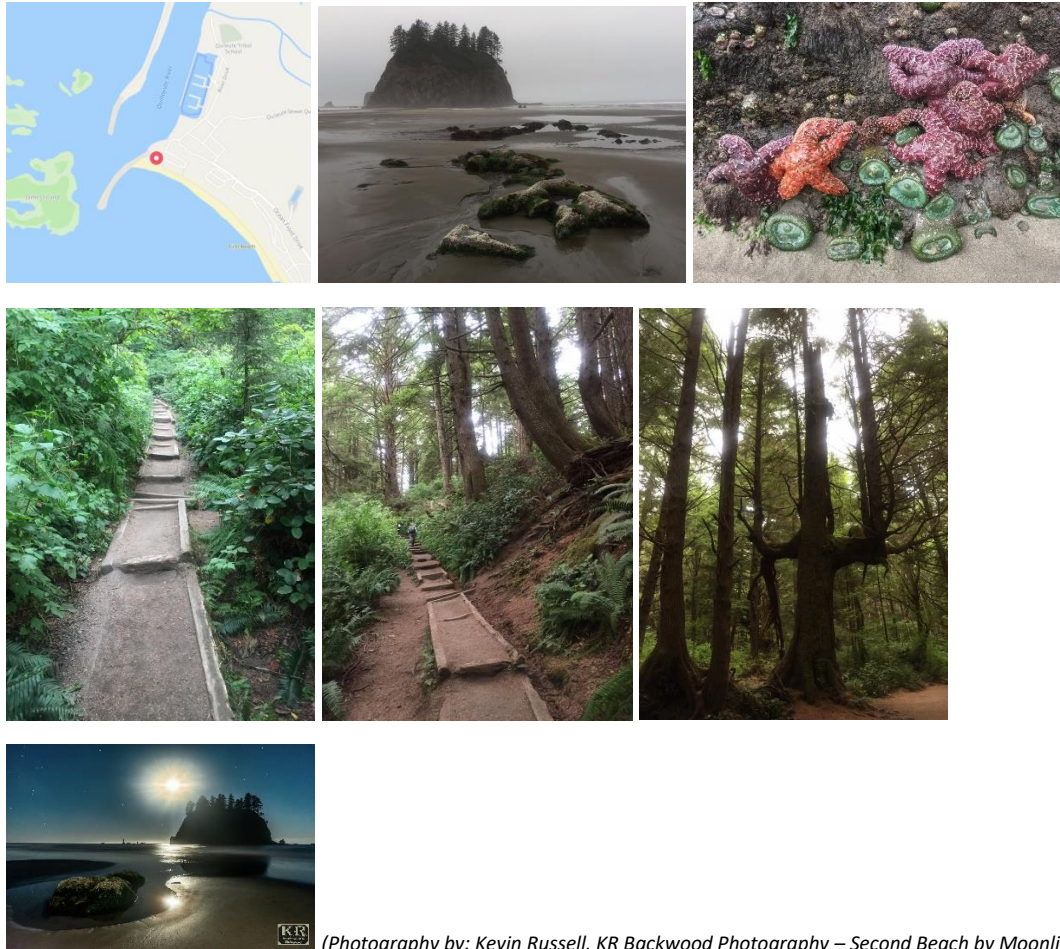
Wildlife to observe: Shore bird species and whales during migration seasons.



Establishment Name	Establishment Location	Pricing	Recommendation
Second Beach <a href="http://www.nps.gov/olym/planyourvisit/second-beach-trail.htm">www.nps.gov/olym/planyourvisit/second-beach-trail.htm</a>	Forks, WA	FREE	

It was a bit of a hike to get down to the beach. We hiked down in the dark with our headlamps on, and got to see everything in daylight in our way back up to the car.

A lot of trees growing on nursing logs with exposed roots made interesting shapes.



(Photography by: Kevin Russell, KR Backwood Photography – Second Beach by Moonlight)

Wilderness Camping Permits are required for overnight stays at Second Beach. Obtain permits in person at the Wilderness Information Center in Port Angeles or the South Shore Lake Quinault Ranger Station. No reservations for South Coast. However, Second Beach is very popular in summer and can fill up.

Unique features: Ocean views, sea stacks, opportunities to view bald eagles and seals. Bird life is common on sea stacks. Whale migration occurs in March/April and October.

Best season: April through October



Best time to take pictures: Morning at low tide for tidal pools with ocean life such as urchins, starfish, and other neat creatures, misty sunrises; evening for beautiful ocean sunsets. For sunrise pictures, take your flashlight – you will need it to hike down to the beach in the dark. The beach is full of aged driftwood – large and small.

NOTE: Make sure you know when the tides are coming in or going out. Getting caught at the wrong time can be dangerous.

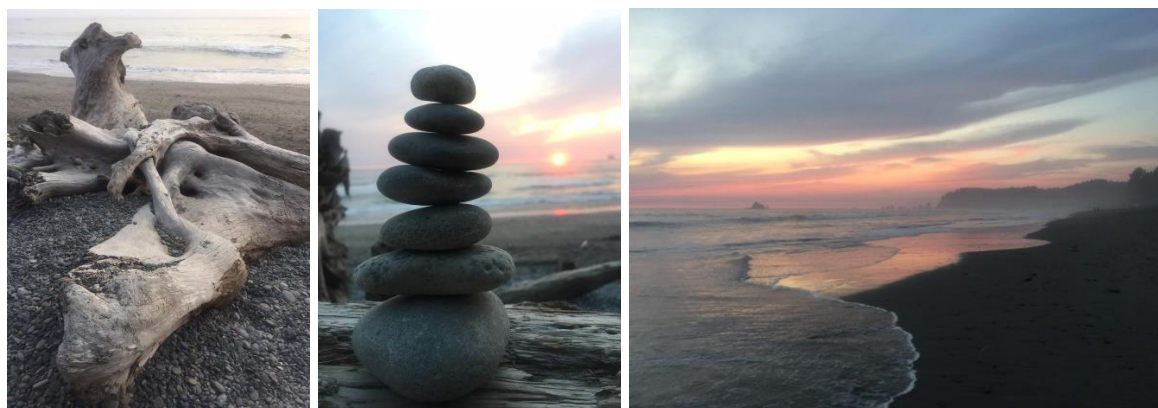
Clothing needed: Water proof shoes/boots; jacket/gloves depending on time of year you are there; bug spray.

Equipment needed: Tri-pod; telephoto lens; macro lens; graduated ND and full ND filters.

Hiking level: Moderate – somewhat steep stairs to get down to the beach and water. May also have to crawl over driftwood on the beach, and some of these can get pretty big!

Wildlife to observe: Shore bird species and whales during migration seasons.

Establishment Name	Establishment Location	Pricing	Recommendation
Rialto Beach	Forks, WA 98331 PH: 360-565-3130	FREE	9.8/10 (on FB)



Rialto Beach is a public beach adjacent to Mora Campground in the Olympic National Park, near the mouth of the Quillayute River. It is composed of an ocean beach and coastal forest. The many miles of seaside topography offer views of sea stacks and rock formations in the Pacific Ocean.

Best time to take pictures: Morning at low tide for tidal pools with ocean life such as urchins, starfish, and other neat creatures, misty sunrises; evening for beautiful ocean sunsets. For sunrise pictures, take your flashlight – you will need it to hike down to the beach in the dark. The beach is full of aged driftwood – large and small.

NOTE: Make sure you know when the tides are coming in or going out. Getting caught at the wrong time can be dangerous.



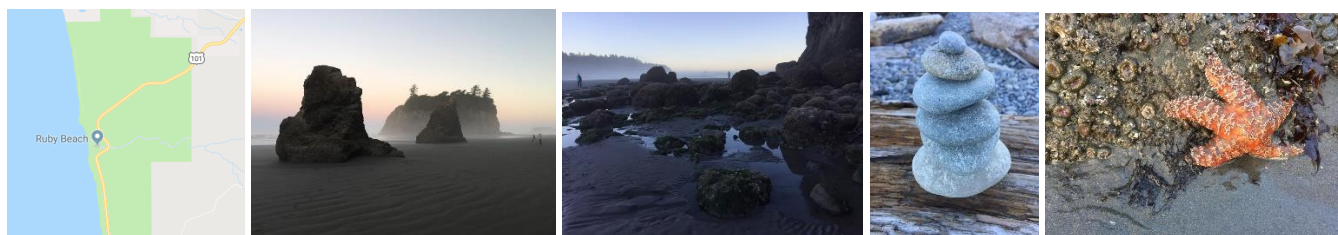
Clothing needed: Water proof shoes/boots; jacket/gloves depending on time of year you are there; bug spray.

Equipment needed: Tri-pod; Graduated Neutral Density (ND) and full ND filters; remote shutter release; telephoto and macro lenses; flashlights.

Hiking level: Moderate – somewhat steep stairs to get down to the beach and water. May also have to crawl over driftwood on the beach, and some of these can get pretty big!

Wildlife to observe: Shore bird species and whales during migration seasons.

Establishment Name	Establishment Location	Pricing	Recommendation
Ruby Beach	Highway 101, south of Forks, WA 38331 PH: 360-565-3130		9.8/10 on FB



Best time to take pictures: Morning at low tide for tidal pools with ocean life such as urchins, starfish, and other neat creatures, misty sunrises; evening for beautiful ocean sunsets. For sunrise pictures, take your flashlight – you will need it to hike down to the beach in the dark. The beach is full of aged driftwood – large and small.

NOTE: Make sure you know when the tides are coming in or going out. Getting caught at the wrong time can be dangerous.

Clothing needed: Water proof shoes/boots; jacket/gloves depending on time of year you are there; bug spray.

Equipment needed: Tri-pod; Graduated Neutral Density (ND) and full ND filters; remote shutter release; telephoto and macro lenses; flashlights.

Hiking level: Moderate – somewhat steep stairs to get down to the beach and water. May also have to crawl over driftwood on the beach, and some of these can get pretty big!

Wildlife to observe: Shore bird species and whales during migration seasons.



Establishment Name	Establishment Location	Pricing	Recommendation
Madison Creek Falls	Elwha Valley, Port Angeles, WA 98362 Located at 101 and Olympic Hot Springs Rd, right at the Elwha River junction.		

These waterfalls were maybe 0.2 mile from the parking lot and the falls were beautiful.



Best time to take pictures: We did not spend a lot of time in this location other than at the falls for photography, so there are no recommendations at this time for time/places to take pictures, other than to enjoy the beautiful scenery.

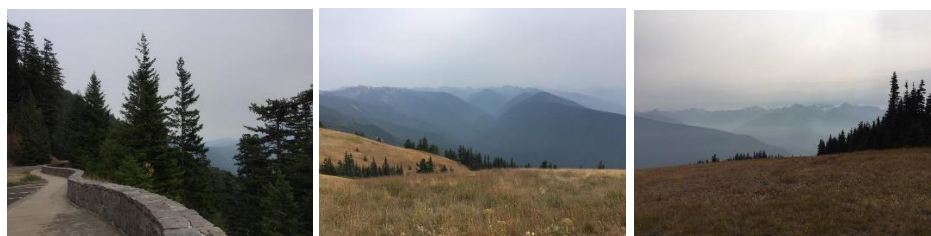
Clothing needed: Water proof shoes/boots if you want to walk up to the base of the falls; jacket/gloves depending on time of year you are there; bug spray.

Equipment needed: Tri-pod; Graduated Neutral Density (ND) and full ND filters; remote shutter release; telephoto and macro lenses; flashlights.

Hiking level: Easy to Moderate – the trail was paved and only about a ¼ mile, but there were some elevation changes to get to the falls.

Wildlife to observe: Personally unknown.

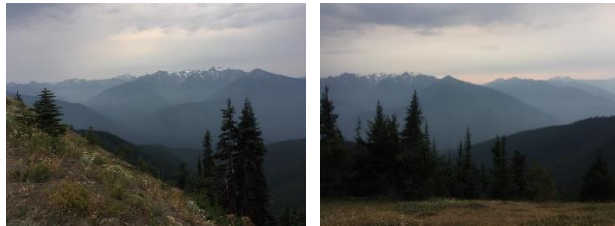
Establishment Name	Establishment Location	Pricing	Recommendation
Hurricane Ridge – Main area with Visitor Center Store	Port Angeles, WA 98362 PH: 360-565-3130		9.4/10 (on FB)





There were wildfires in the area while we were there, so there was a smokey haze over the mountain ranges.

Establishment Name	Establishment Location	Pricing	Recommendation
Hurricane Hill Trail	Port Angeles, WA 98362 PH: 360-565-3130		9.4/10 (on FB)



Best time to take pictures: We were here for only less than 2 hours, and it was in the late afternoon to early evening for sunset, just before they closed. I would think that sunrise would be beautiful as well.

Clothing needed: Hiking shoes/boots; jacket/gloves depending on time of year you are there; bug spray.

Equipment needed: Tri-pod; Graduated Neutral Density (ND) filters; remote shutter release; telephoto and macro lenses; flashlights.

Hiking level: Easy to Strenuous – We decided to head up Hurricane Hill for a 1.65 mile round-trip hike. While the trail is mostly paved, it was somewhat steep in areas. For those with breathing issues, you will need to take this one slow. But the views were beautiful and worth seeing!

Wildlife to observe: Chipmunks, deer, juvenile Bald Eagle, Ptarmigan, and we were told of Marmots on the trail (we did not get to see these, however).

#### Places to See – Coastline

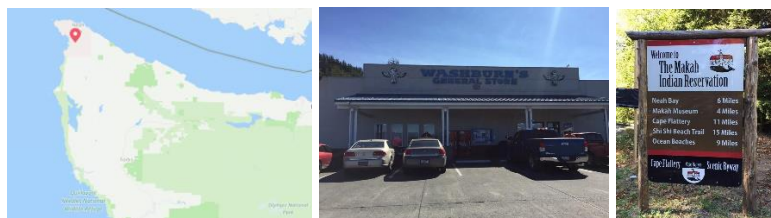
Establishment Name	Establishment Location	Pricing	Recommendation
Beach 4	Highway 101, south of Forks, WA 38331		

We saw whales from a distance. But was told it was a pod of gray whales on their southern migration. This was a short stop we made. We did not stay long.



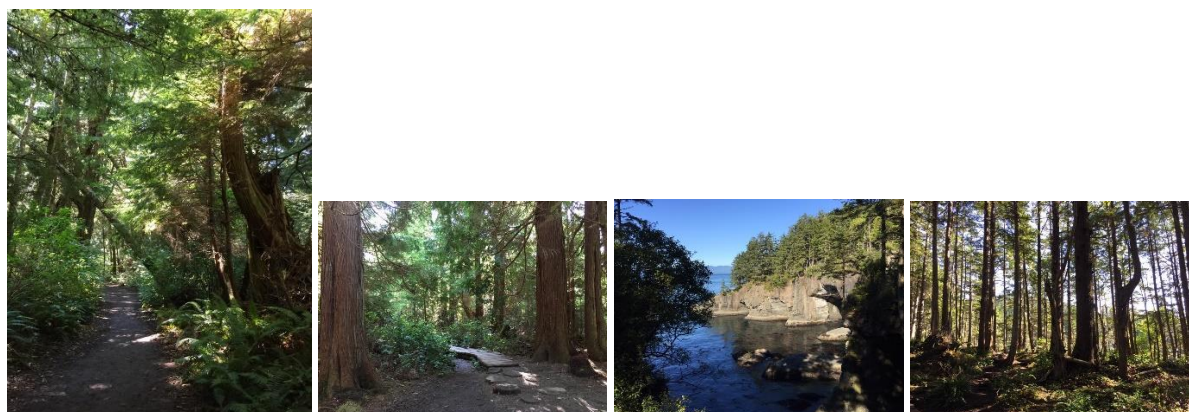


Establishment Name	Establishment Location	Pricing	Recommendation
The Makah Indian Reservation – Washburn’s General Store	Neah Bay, WA 98357 via Cape Flattery Scenic Byway		We stopped here to pick up our Recreational Use Permit for the Makah Tribal lands.



Establishment Name	Establishment Location	Pricing	Recommendation
Cape Flattery	Neah Bay, WA 98357 PH: 360-645-2231		See the “Hole in the Wall” at the end of the trail.

Cape Flattery is the northwestern most point of the contiguous United States. It is in Clallam County, Washington on the Olympic Peninsula, where the Strait of Juan de Fuca joins the Pacific Ocean. It is also part of the Makah Reservation, and is the northern boundary of the Olympic Coast National Marine Sanctuary. Cape Flattery can be reached from a short hike, most of which is board-walked. The western most point in the contiguous United States is at Cape Alava, south of Cape Flattery in Olympic National Park. However, the western most tip of Cape Flattery is almost exactly as far west as Cape Alava, the difference being approximately 5 seconds of longitude at high tide and somewhat more at low tide.



Best time/place(s) to take pictures: We arrived mid-day, while it was hot and somewhat crowded with people. There are no recommendations at this time for time/places to take pictures, other than to enjoy the beautiful scenery as you walk the trail to the end.



Clothing needed: Hiking shoes/boots; jacket/gloves depending on time of year you are there; bug spray.

Equipment needed: Tri-pod; Graduated Neutral Density (ND) filters; telephoto and macro lenses.

Hiking level: Easy to Strenuous – While the trail is mostly a boardwalk, it was somewhat steep and uneven in areas. For those with breathing issues, you will need to take this one slow. But the views were beautiful and worth seeing!

Wildlife to observe: Personally unknown.

#### Dates of Travels

Sep 3 – Sep 5, 2017

#### Lodging – La Push

Establishment Name	Establishment Location	Pricing	Recommendation
Quileute Oceanside Resort <a href="http://www.quileuteoceanside.com">www.quileuteoceanside.com</a>	330 Ocean Dr., La Push, WA 98350 PH: 360-374-5267	\$\$\$  NOTE: No WI-FI available in our cabin. It was available in SW corner of main office.	9.4-10 (on FB) Highly recommended. We booked cabin #44. Stairs to get up, parking in front. A/C not great, slept with windows open. Wrap around porch with chairs facing beach. Laundry facilities on property.



Establishment Name	Establishment Location	Pricing	Recommendation
First Beach, Quileute Oceanside Resort	La Push, WA		



This beach was directly behind our cabin and was fabulous to walk on in the mornings. Lots of interesting driftwood pieces.



Best time/place(s) to take pictures: Morning at low tide for tidal pools, misty sunrises; evening for beautiful ocean sunsets. For sunrise pictures, take your flashlight – you will need it to hike to the beach in the dark. Windy on the beach.

Clothing needed: Water proof hiking shoes/boots; jacket/gloves depending on time of year you are there; bug spray.

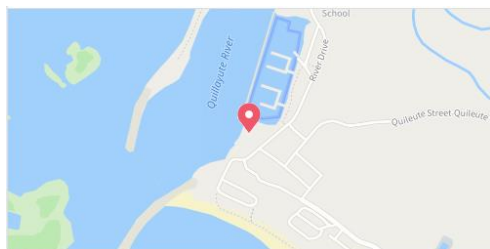
Equipment needed: Tri-pod; Graduated Neutral Density (ND) and full ND filters; remote shutter release; telephoto and macro lenses; flashlights.

Hiking level: Easy. The trail is level and right behind the cabins.

Wildlife to observe: Shore birds and seals.

#### Restaurant – La Push

Establishment Name	Establishment Location	Pricing	Recommendation
River's Edge Restaurant (American/Seafood Family Style) Hours: 8:00a – 8:00p <a href="http://www.quileutenation.org">www.quileutenation.org</a>	41 Main St., La Push, WA 98350 PH: 360-374-0777	\$\$	8.6/10 (on FB) We had our breakfasts and a dinner here. We were NOT disappointed.





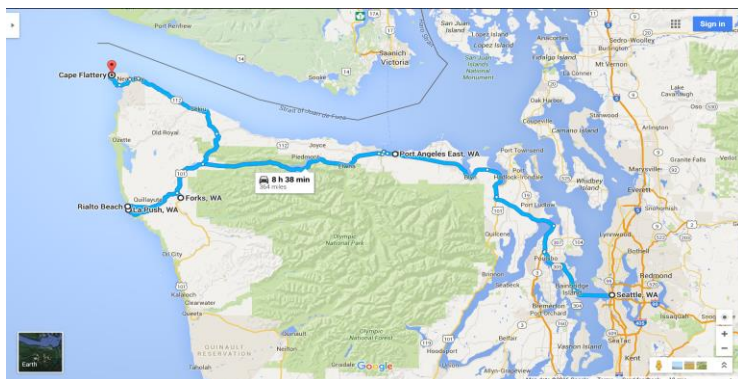
## Places to See – Forks/La Push

Establishment Name	Establishment Location	Pricing	Recommendation
Salmon Cascades	Sol Duc River, near Port Angeles	FREE	



This was a side trip, but no salmon were to be seen while we were there. Looks like October may be a good time, though!

Drove the scenic CQ 113 Byway along the coast from La Push to Port Angeles.



## Places to See – CQ 113 Scenic Byway

Establishment Name	Establishment Location	Pricing	Recommendation
Crescent Beach & RV Park (Campground, RV Park, Business) Hours: Always open <a href="http://www.olypen.com/crescent">www.olypen.com/crescent</a>	2860 Crescent Beach Rd., Port Angeles, WA 98363 PH: 360-928-3344		8.4/10 (on FB)

Tongue Point Picnic Area, Audubon Birding Area, Salt Creek Recreation Area are all in the vicinity and neat to see.





## Dates of Travels

Sep 6 – Sep 7, 2017

## Lodging – Port Angeles

Establishment Name	Establishment Location	Pricing	Recommendation
Olympic Lodge <a href="http://www.olympiclodge.com">www.olympiclodge.com</a>	140 S. Del Guzzi Dr., Port Angeles, WA 98362 PH: 360-452-2993	\$\$  NOTE: Free WI-FI and free parking.	9.2/10 (on FB) This was a fabulous place. I would definitely stay here again.



(Photograph from Olympic Lodge Facebook page – Cover Photo)





## Restaurant – Port Angeles

Establishment Name	Establishment Location	Pricing	Recommendation
Sirens Pub of Distinction (Bar & Grill, Gastropub) Hours: 12:00n – 2:00a <a href="http://www.sirenspub.com">www.sirenspub.com</a>	823 Water St., Port Townsend, WA 98368 PH: 360-379-1100	\$\$	8.8/10 (on FB) Great food with a great view from 2 <sup>nd</sup> floor balcony seating area.



Establishment Name	Establishment Location	Pricing	Recommendation
Kokopelli Grill (American/Seafood) <a href="http://www.kokopelli-grill.com">www.kokopelli-grill.com</a>	203 E. Front St., Port Angeles, WA 98362 PH: 360-457-6040	\$\$	9.2/10 (on FB) Server was Cindy – she was great, and so was the food!

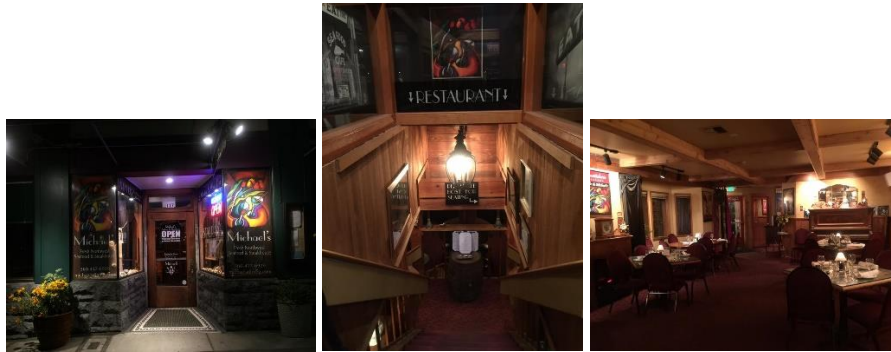


Establishment Name	Establishment Location	Pricing	Recommendation
LaBelle Creperie (Creperie, Coffee Shop, French Restaurant) Hours:	222 N. Lincoln St., Port Angeles, WA 98362 PH: 360-452-9214	\$\$	9.4/10 (on FB) Great food with a great view from 2 <sup>nd</sup> floor balcony seating area.





Establishment Name	Establishment Location	Pricing	Recommendation
Michael's Fresh Northwest Seafood & Steakhouse (Seafood, Steakhouse, American) Hours: 4:00p – 10:00p <a href="http://www.michaelsdining.com">www.michaelsdining.com</a>	117 E. 1 <sup>st</sup> St., Port Angeles, WA 98362 PH: 360-417-6929	\$\$	9.2/10 (on FB) Outstanding food; highly recommended!



#### Places to See – Port Angeles

Establishment Name	Establishment Location	Pricing	Recommendation
Olympic Cellars Winery (Winery, Vineyard, Retail, Landmark/Historical Place) <a href="http://www.olympiccellars.com">www.olympiccellars.com</a>	255410 Highway 101, Port Angeles, WA 98362 PH: 360-452-0160	\$\$	9.2/10 (on FB) We did some taste testing here, and I ordered several bottles of wine to be shipped home.

Home of “The Working Girls” wine.

#### Places to See – Port Crescent

Establishment Name	Establishment Location	Pricing	Recommendation
Crescent Beach	Port Crescent, WA	FREE	

Charlie – docent with lots of great information. He pointed out a sea otter to us. We also saw a baby star fish at the bottom of the little island, which is a good thing. We were told that the Parvo viruses decimated the star fish population for two years, and seeing a baby heralds good news for them to rebound in the area.





(Photo by: Abigail Lim (via FB))

Best time/place(s) to take pictures: Morning at low tide for tidal pools, misty sunrises; evening for beautiful ocean sunsets.

Clothing needed: Water proof hiking shoes/boots; jacket/gloves depending on time of year you are there; bug spray.

Equipment needed: Tri-pod; Graduated Neutral Density (ND) filters; remote shutter release; telephoto and macro lenses; flashlights.

Hiking level: Easy. The trail is level and a fairly straight shot from the parking lot.

Wildlife to observe: Shore birds, we saw an otter, tidal pool life.

## Transportation

Establishment Name	Establishment Location	Pricing	Recommendation
Bainbridge Island Ferry Terminal (Boat/Ferry Company) <a href="http://www.bainbridgeisland.com/ferry">www.bainbridgeisland.com/ferry</a>	270 Olympic Dr. SE, Bainbridge Island, WA 98110 PH: 206-464-6400		8.6/10 (on FB)





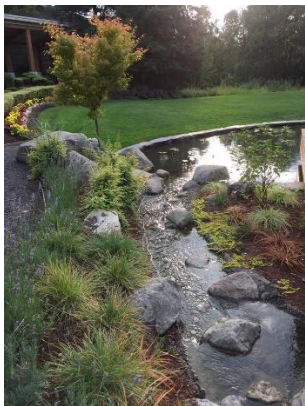
Took the Ferry from Bainbridge Island back over to Seattle to get to our last hotel.

#### Dates of Travels

Sep 8, 2017

#### Lodging – Seattle

Establishment Name	Establishment Location	Pricing	Recommendation
Cedarbrook Lodge <a href="http://www.cedarbrooklodge.com">www.cedarbrooklodge.com</a>	18525 36 <sup>th</sup> Ave. S., Seattle, WA 98188 PH: 206-901-9268	\$\$\$  NOTE: Free WI-FI and free parking. Free airport shuttle.	9.6/10 (on FB) 5 mins away from the airport. This place is a hidden gem! It is FABULOUS! Will definitely come back here.





## Restaurant – Seattle

Establishment Name	Establishment Location	Pricing	Recommendation
Copperleaf Restaurant, Bar & Terrace	18525 36 <sup>th</sup> Ave. S., Seattle, WA 98188 PH: 206-901-9268	\$\$\$	9.6/10 (on FB) Located on the lower level of the hotel, just off of the lobby. Great food with a beautiful view.

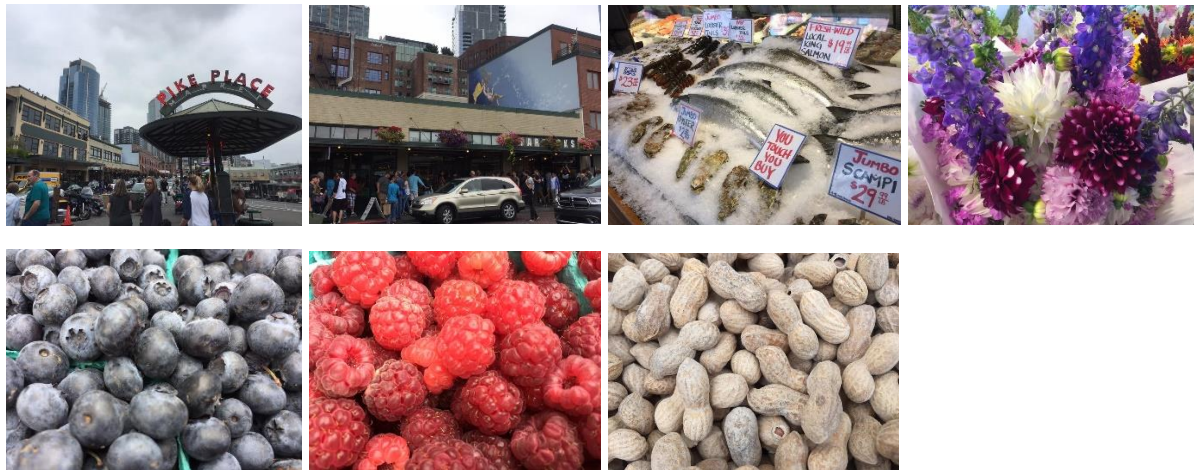


(Photograph from Copperleaf Restaurant website)



## Places to See – Seattle

Establishment Name	Establishment Location	Pricing	Recommendation
Pike Place Market (Retail/Shopping; Grocery Store; Fish, Flowers and Food Market) Hours: 7:00a – 1:00a <a href="http://www.pikeplacemarket.org">www.pikeplacemarket.org</a>	85 Pike St., Seattle, WA 98101 PH: 206-682-7453	\$\$	9.4/10 (on FB) The ORIGINAL Starbucks lives here! This place is great fun to walk around and look.



*\* Recommended by native resident: Get a Beecher's Grilled Cheese sandwich.*

## Transportation

Sep 9, 2017: SEA – DFW (on American Airlines)



#### APPENDIX 1 – Pricing Scale for Lodging

Inexpensive (\$) – < \$75 per night  
Moderate (\$\$) – \$75 - \$120 per night  
Expensive (\$\$\$) – > \$120 per night

#### APPENDIX 2 – Pricing Scale for Restaurants

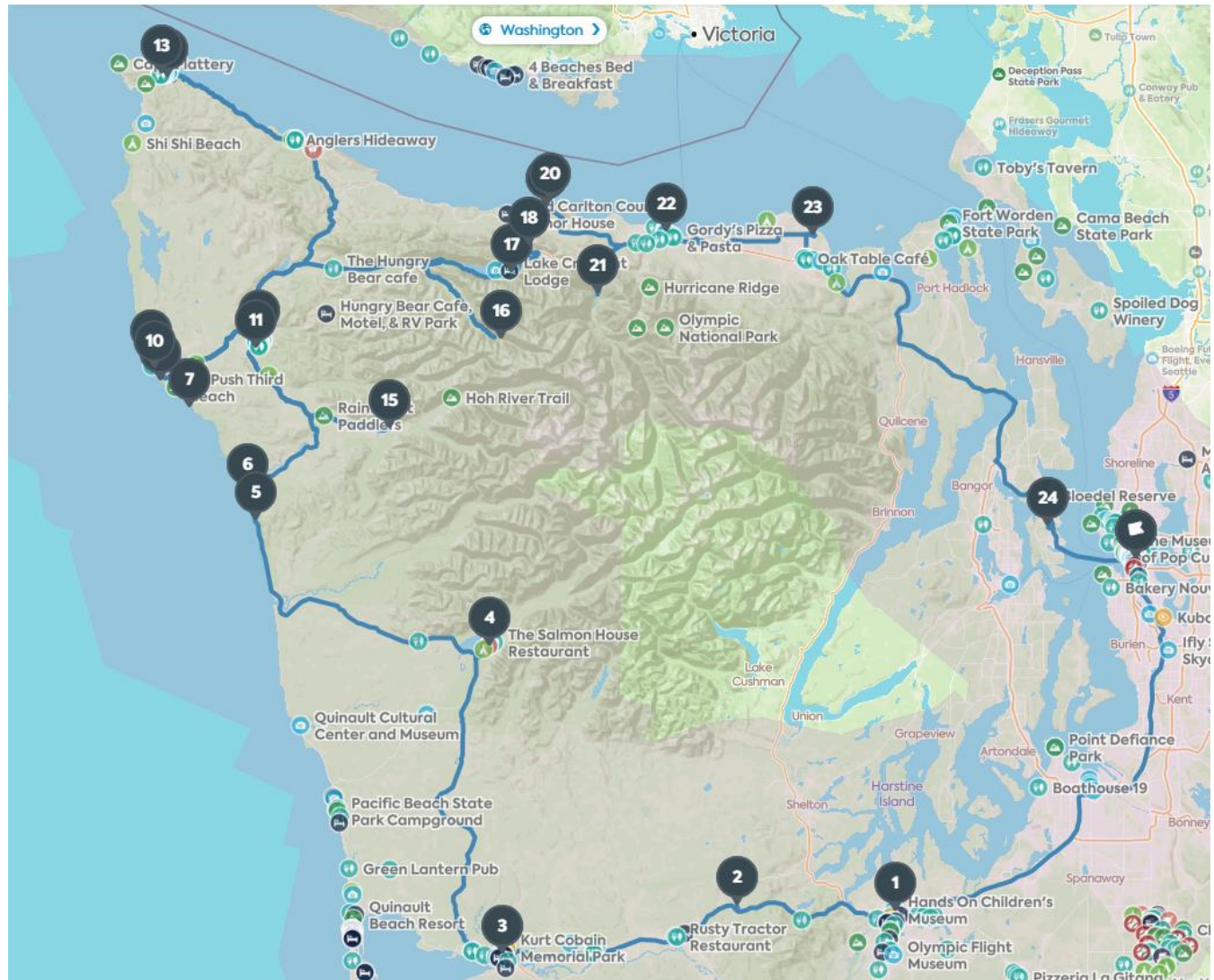
Inexpensive (\$) – < \$15 per person  
Moderate (\$\$) – \$15 - \$30 per person  
Expensive (\$\$\$) – > \$30 per person

#### APPENDIX 3 – Hiking Level Scale

Easy – flat, well paved or solid dirt, short hike less than 1/2 mile, suitable for all ages and fitness levels;  
Moderate – trails consist of variable terrain containing small changes in elevations and texture, may not be suitable for small children, may require a hiking stick, up to 5 miles round-trip hiking distance;  
Strenuous – only experienced or fit hikers, large change in elevation, uneven terrain, may require a hiking stick, half-day or more round-trip hiking distance.



## APPENDIX 4 – Map



START	Seattle	13	Neah Bay
1	Olympia	14	Cape Flattery
2	McLeary	15	Hoh Rainforest
3	Aberdeen	16	Sol Duc Falls
4	Quinault	17	Marymere Falls Nature Trail
5	Kalaloch Beach Trail 4	18	Salt Creek Recreation Area
6	Ruby Beach	19	Crescent Beach & RV Park
7	Kalaloch Lodge	20	Tongue Point Road
8	Second Beach	21	Madison Creek Falls
9	Forks	22	Port Angeles
10	Quieleute Oceanside Resort	23	Hurricane Ridge Drive/Trail
11	First Beach	24	Bainbridge Island/Ferry
12	Rialto Beach	END	Seattle